

FRICTION MODIFICATION • INSTALLATION • **RAIL APPLICATORS** • SERVICE • TRAINING • REMOTE MONITORING



**We bring it all together.**



## Electric Gauge Face And Friction Modifier Applicator - Single Track & Twin Track

### **ELECTRO™ 10, 20, 30**

Electro rail applicators provide technological advancements mechanical and hydraulic applicators can't offer including twin rail blades for multi-curve rail lubrication. Ideal for reverse curves, one unit can replace multiple existing applicators.

The robust galvanized cabinet houses the main components of the applicator. With systems pumping from 8 to 15 metres the cabinet can be located in a place of safety for easy maintenance and filling.

A twin chamber pump with direct gravity feed from the reservoir means there is no residual grease left in the reservoir. The grease is pumped to blades via twin output hoses, which allows blade staggering on left and right rails for optimum grease pickup.

Precise grease output is provided by a patented stepped control box setting and is independent of grease viscosity. Output is consistent year-round.

Multiple blade sizes of 40cm, 60cm or 150cm can be supplied as needed.

- Pumping initiated by a non-contact field or gauge side wheel sensor
- Mast mounted solar panel & wind turbine. mains electric, cabinet mounted solar panel
- Twin sleeper base
- Robust trackside cabinet with three point locking system for full height security door – no padlocks required
- Storage for up to three spare pails of grease
- Various blade options including full circumference blade
- Convenient hatch for easy filling straight from a pail





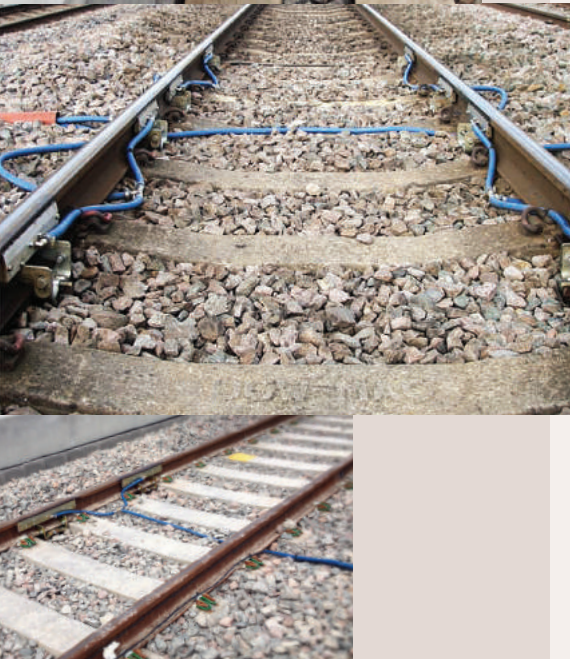
## Electric Gauge Face And Friction Modifier Applicator - Single Track & Twin Track

### ELECTRO™ 15

Electro 15 applicators build on our established range of gauge face and Top of Rail applicators.

Electro 15 offers many of the same well known features of the Electro 10, 20, and 30 but in a more compact configuration with many operational options built in. Choose from pump type, power source, single or twin track hose layout. Electro 15 can be custom configured for every application.

- Single curve or multiple reverse curve operation
- Robust galvanized steel twin compartment cabinet with pumping options from 8 to 15 metres
- Pump options range from our patented step control gear pumps to our time controlled systems
- Pumping initiated by non-contact wheel sensor, field or gauge mounted
- Choose from cabinet mounted solar panel, mast mounted solar panel or electrical mains power
- Twin sleeper or concrete plinth mounting base
- Various blade options including 40cm, 60cm and 150cm
- Convenient filling hatch for easy filling straight from a pail
- Base model 100kg grease capacity
- Remote monitoring available
- Single or twin track application available
- Ideal for gauge face or Top of Rail applications



## Electric Gauge Face And Friction Modifier Applicator

### LUBRICURVE® ELECTRO™ 5

Electro 5 electric rail applicator system provides a smaller and lower capacity unit with similar features to Electro 10, 20 and 30. A smaller cabinet means the full benefits of an electric rail applicator can be utilized in areas where space is limited. The cabinet can be installed on a pole, wall, handrail or sleeper. In addition, the system can be powered by solar panels or electrical mains and offers full flexibility in all areas.

Electro 5 can be used as a gauge face applicator with EasiBlade™ and EasiCheck™ blades or alternatively as a top of rail system with FrictionEase blades. This versatile, economical unit compliments our full line of electric applicators.

- Economical
- Gauge face lubrication friction modifier applications, 35kg reservoir capacity
- Installation on post or frame
- Time based, step based output control options
- Larger reservoir capacity is available with Electro 10, 20 and 30 models





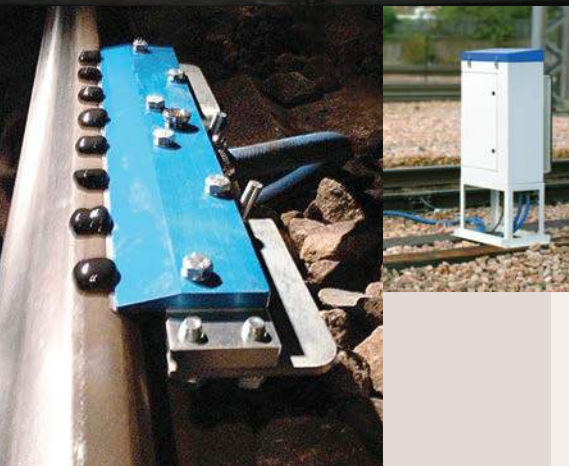
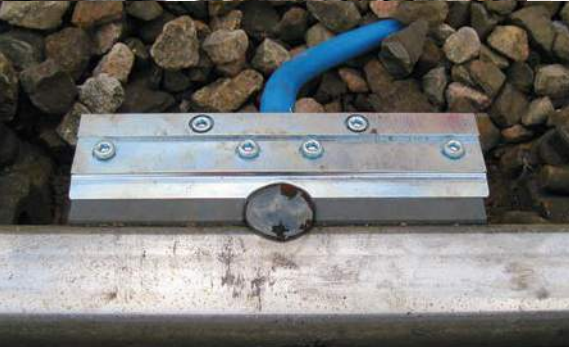
## Friction Modifier

### **LUBRICURVE® FrictionEase™**

High rail and check rail lubrication have now become good practice around the world to provide extended rail and wheel life. As we increase our understanding of the relationship between rail and wheel, we see other factors coming into play. It is now evident that material is needed on the head of the rail to help reduce squeal, corrugation, lateral force low rail RCF and excessive energy consumption. Using our electric rail applicators to apply friction modifiers to the head of the rail will help overcome these issues.

Friction modifier can be picked up and applied along the head of the rail by passing wheels from the FrictionEase blades.

- Applied from electric applicators
- Carry more than 1km
- Reduces squeal
- Reduces low rail RCF to give large operating cost reductions
- Reduces energy consumption



## Mechanical Rail Applicator

### LUBRICURVE® PD50

LubriCurve PD50 is a simple, efficient applicator that provides high performance with low maintenance. Easy to install and suitable for all types of rail profile. Whitmore applicators are in use worldwide. A patented positive displacement pump dispenses a consistent grease volume ideal for high or low speed traffic with minimal plunger movement.

This ensures reduced wear on plungers and results in less maintenance. Grease output isn't speed dependent and can be set for low output, a factor often essential for light rail and tramway lubrication.

Distribution blades can be supplied in various lengths and the modular design enables easy installation and replacement with minimal blocking. There is simple blade height adjustment for precise delivery of grease to wheel flange and optional blade troughs to collect excess grease for easy cleaning. Blades can be fitted for high rail lubrication, check rail lubrication or both rails for reverse curve lubrication from one unit.

Reservoirs are robust, durable, lightweight aluminum and designed for quick fill. Sizes available include 9kg, 35kg and 70kg. New products include low clearance reservoirs and clamps for use with slab track.

- High performance
- Easy to install
- Low maintenance
- Suits all rail types
- Parts compatible with other mechanical and hydraulic systems
- Positive displacement pump (standard & low output options)
- Modular blade design, variable blade size
- Standard, EasiBlade & EasiCheck options
- Blade trough
- Robust, lightweight reservoir in 9kg, 35kg or 70kg capacity





## Single Pump, Low Volume Output, Mechanical Applicator for Switches & Crossings

### **LUBRICURVE® EasiPoint™**

EasiPoint system has been developed as a cost effective true alternative to canister lubrication for S&C. The low volume positive displacement pump plunger has been precision designed to provide 40% of the output of a standard Whitmore pump plunger.

The EasiPoint system incorporates both EasiPump™ and EasiBlade™ technology, which allows for quick and simple installation and maintenance. Both pump and blade can be pivoted away from the rail face for grinding with no loose parts and then refitted easily and quickly.

- S&C and Point Tip Lubrication
- Economical
- Single positive displacement 40% pump
- All track parts pivot away for grinding
- No loose parts
- Quick to install
- Ideal for light and heavy haul railways
- Fits all rail profiles
- 9kg or 37kg reservoir



## Pivoting Single Pump Mechanical Rail Applicator

### **LUBRICURVE® EasiPump™**

EasiPump has been designed as an alternative to the standard double pump unit. Based on the same positive displacement technology, it gives a lower cost option for running rail and check rail lubrication. A single clamp ensures quick installation and the pivoting clamp system means both the pump and the blades can now be lowered away from the rail face when rail grinding (no loose items).

An EasiPump rail applicator can be used for conventional high rail lubrication and can act as a true alternative to switch blade canister systems that pump fixed amounts of grease irrespective of the type of train passing through. However, EasiPump delivers grease when and where it's required dependent on train activation.

- Economical
- Single positive displacement pump
- Available with one or two blades
- Ideal for light and mainline railways
- 9kg or 37kg reservoir
- Point tip lubrication
- Fits all rail profiles
- Quick to install
- Ideal for check rail and running rail applications
- Short curve lubrication
- Pivoting pump



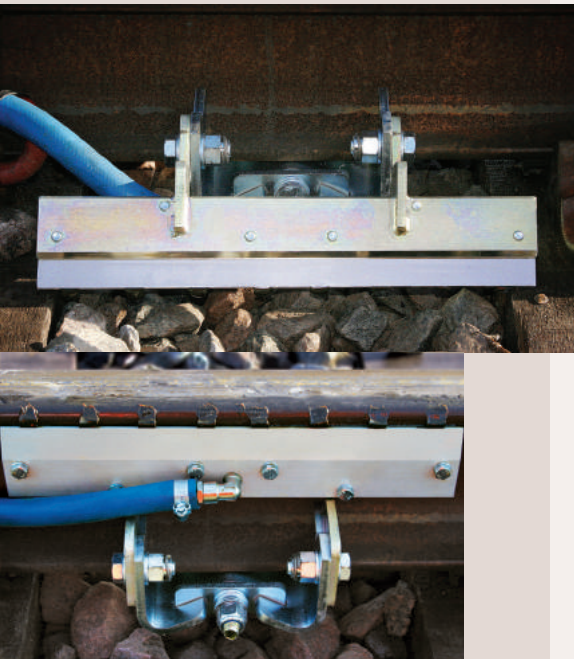


## Running Rail Wiper Blades

### **LUBRICURVE® EasiBlade™**

EasiBlade is specially designed for quick, easy installation and maintenance for all types of running rail worldwide. Eight, sixteen, or thirty-two large ports and wide grease channels reduce grease blockages and simple removal of bolts exposes the inside of the blade for fast cleaning.

The unique pivoting mechanism allows lowering of the blade for rail grinding without removal of any parts. This reduces time and component losses. EasiBlade can be used with any make of electric, mechanical, hydraulic or canister rail applicators.



- 40cm or 60cm length blade options
- Single point attachment
- Speedy installation
- Simple quick and easy maintenance
- High quality anti-vibration nuts
- Drops away from rail prior to grinding and lifts after grinding
- No loose parts
- Variants for all rail types
- 12mm or 16mm hose options
- No gaskets
- Choice of 10mm or 15mm grease ports
- Aluminium or steel fronts

## Blade Legs For Consistent Positioning of Blades Against Gauge Face

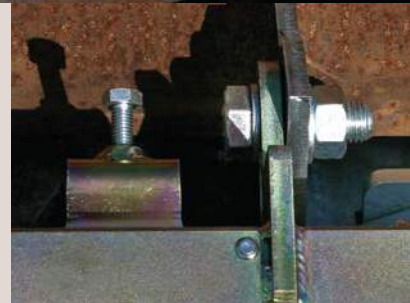
### **LUBRICURVE® EasiLegs™**

Before grinding train passes, rail applicator blades should be lowered away from the rail to help prevent damage to the top of the front plate. Up until now, a trained applicator technician was required to reset blade heights following the passage of the train. This has meant blades would be left off for long periods leading to more rail wear. Applicator technicians have had to stop their daily maintenance cycles creating maintenance backlogs and wasted time.

Whitmore has designed and produced a simple yet effective piece of equipment, which can be bolted onto our blades and enables anyone to raise and secure blades to the correct height against the gauge face following the passage of a grinding train.

This innovative equipment is called EasiLegs and can be retrofitted to blades.

- Automatic blade setting
- Consistent height against gauge face
- Blade height can be reset by non-skilled personnel
- Economical
- Fits on any Whitmore blades
- Retrofit is possible





## Check Rail Blade

### **LUBRICURVE® EasiCheck™**

Our EasiCheck Blade is easy to install on all types of check/restraining rail profiles. Six large ports and wide grease channels reduce grease blockages, and our simple to remove top plate allows easy access to the inside of the blade for cleaning.

Whitmore check rail blades can be used on any make of electric, mechanical, hydraulic or canister rail applicators.

- Removable top section for easy access to grease channels
- Speedy installation
- Simple, quick and easy maintenance
- Minimize port blocking, minimize maintenance
- Suits all check rails
- 12mm or 16mm hose options
- Suitable for Whitmore and other applicators



info-UK@whitmores.com  
+44 1707-379870

Unit 9, Foster Avenue  
Woodside Park Industrial Estate  
Dunstable, Bedfordshire LU5 5TA



**Friction Control Made Easy.**



Since 1893

**whitmores.com**  
sales@whitmores.com • +1 972.771.1000

An ISO 9001 and ISO 14001 registered company